

# Marine Litter



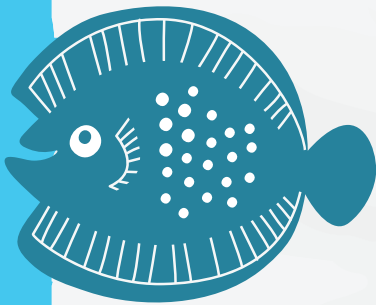
Lyme Bay  
Fisheries and  
Conservation Reserve



## Extension Tasks

*A series of tasks and  
challenges about marine litter  
found in and around Lyme Bay*

**KS4 & KS5**



**BLUE MARINE  
FOUNDATION**

Brought to you by the Blue Marine Foundation.

# Marine Litter in Lyme Bay

A series of extension tasks linked to marine litter.



## Extension Idea

### 🔍 Microbeads & Nano Plastics

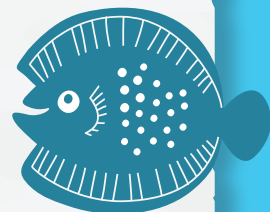
Microbeads have been getting lots of publicity recently. As of January 2018, the manufacture of products containing microbeads has been banned in the UK with a ban on the sale of products containing microbeads to come into force late in 2018.

**Research Activity** (See Teacher's Notes for answers).

- What are microbeads?
- Why are they about to be banned in the UK?
- What products contain them?
- What might manufacturers use instead of microbeads?

**There are other small plastic particles that are found in the ocean, these are called Nano plastics and microfibres.**

- Can you find out what each of these is?
- Where do they come from?
- What problems they might cause?
- Can you think of ways of reducing these types of plastics in the world's oceans?



## Extension Idea

### 🔍 How can you reduce marine litter?

Pupils can make a poster or a leaflet outlining ways the school, parents, local community can all play a part in helping to reduce marine litter. Even if you don't live by the sea there are things you can do especially as storm drains, rivers and streams all eventually reach the sea.

If you don't live near the sea at all then you might like to make as a check list for people to consider when they go on holiday. For example taking re-fillable water bottles and coffee cups.





## Extension Idea



### ➡ Data task – rubbish in Lyme Bay

This is the remainder of the data collected from the Seaton beach cleans between 2006 – 2015.

The data can be split depending on ability:

- Lower ability pupils may only want to attempt one type of rubbish over the years
- Glass has numbers all below 45 which is nicer for scaling
- Rubber are all below 100 etc.

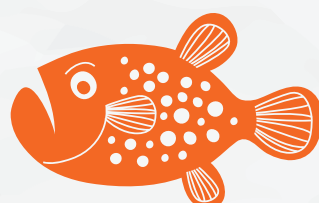
### Other ideas...

You might ask pupils to choose one waste stream and make a poster about it.

- They may wish to include possible reasoning for fluctuations in quantity of rubbish collected year on year.
- They could find and list examples of their waste stream found on beaches.
- They could research and suggest where some of this rubbish has come from and possible ways that these could be reduced in the future.
- They should make sure that their poster has a clear heading and a brief synopsis as well as a chart showing their waste stream over the years.



Year	Rubber	Cloth	Paper	Wood	Metal	Glass
2006	37	181	15	23	80	1
2007	5	18	25	21	22	5
2008	36	150	35	52	63	43
2009	23	19	31	36	73	12
2010	41	69	356	103	162	19
2011	27	55	38	48	142	6
2012	70	80	162	88	128	39
2013	83	85	202	105	169	26
2014	53	110	238	130	241	9
2015	92	104	199	131	254	15





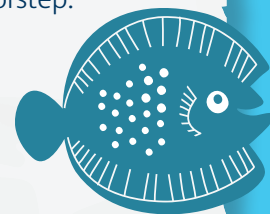


**The Schools Outreach Programme is delivered by the Lyme Bay Fisheries and Conservation Reserve – a marine reserve in Lyme Bay, which straddles the border between Dorset and Devon and is funded by Marks and Spencer.**

The Lyme Bay Reserve is facilitated by the Blue Marine Foundation (BLUE) – a marine conservation charity which aims to solve the crisis in the oceans through providing innovative solutions to overfishing and enabling the creation of marine reserves.

BLUE's pioneering work in Lyme Bay uniquely engages fishermen to take a lead role in the conservation of their fishery providing long term benefits to marine life, fishers and the local community. In celebration, BLUE has established a Schools Outreach Programme to inform the wider public – young and old – about the quiet revolution that has happened on their doorstep.

For more information about our School's Outreach Programme email: [info@lymebayreserve.co.uk](mailto:info@lymebayreserve.co.uk) or visit [www.lymebayreserve.co.uk/education](http://www.lymebayreserve.co.uk/education)



---

## **We'd love to hear what you thought...**

We are constantly improving our Schools Outreach Programme and your feedback would be extremely beneficial to us. Please take five minutes to fill in the feedback form emailed to you once you have tried out these activities so that they can be improved as necessary to make the activities the best they can be – thank you.



**BLUE MARINE  
FOUNDATION**

Facilitated by the Blue Marine Foundation

M&S

Funded by Marks & Spencer



JUNE21